

## Top Stories This Week

- April IIP at 4.1 percent vs 2.1 percent (MOM). May CPI inflation at 5.01 percent vs 4.87 percent (MOM)
- Reliance Power Signs MoU With Bangladesh To Develop 3,000 MW LNG-based Power Plant & LNG Terminal.
- Adani Group to raise `25k cr via global bonds over next couple of months through Adani Ports and Adani Transmission.
- PVR to acquire DT Cinemas for approx Rs 500 cr on slump sale basis. DT Cinemas Is Cinema Exhibition Business Of DLF Utilities.
- Bosch Plans To Realign Starter Motors & Generators Division. Finding A JV Partner Or Buyer For Starter Motors & Generators Division.
- UltraTech Cement Shareholders Approves Scheme Of Arrangement Between Co & JP Assoc.
- GE Likely To Sell Its Private-Equity Lending Unit To CPPIB In A \$12 Bn Deal: Agencies.
- Tata Steel Says UK Unions Plan Strike At Tata Steel, UK On June 22.
- Banking Sources Say ECB Raises Emergency Funding Cap For Greek Banks By €2.3 Bn To €83 Bn: Reuters

## Weekly Indices Change

Index	Close	P. Close	Chg. (%)
SENSEX	26425	26768	-1.28
NIFTY	7982	8114	-1.63
MIDCAP	10121	10353	-2.24
SMLCAP	10573	10851	-2.56
METAL	9186	9458	-2.88
OIL&GAS	9392	9530	-1.45
AUTO	17698	18099	-2.22
TECK	5890	6005	-1.92
BANKEX	20077	20190	-0.56
IT	10474	10705	-2.16
FMCG	7325	7492	-2.23
HC	15435	15912	-3.00
PSU	7438	7589	-1.99
CD	9925	10258	-3.25
POWER	1996	2018	-1.09
CG	16590	16808	-1.30
REALTY	1354	1410	-3.97

## Global Indices

DOW	17898	17849	0.27
NASDAQ	5051	5068	-0.34
FTSE	6784	6804	-0.29
NIKKEI	20407	20460	-0.26
HANGSENG	27280	27260	0.07

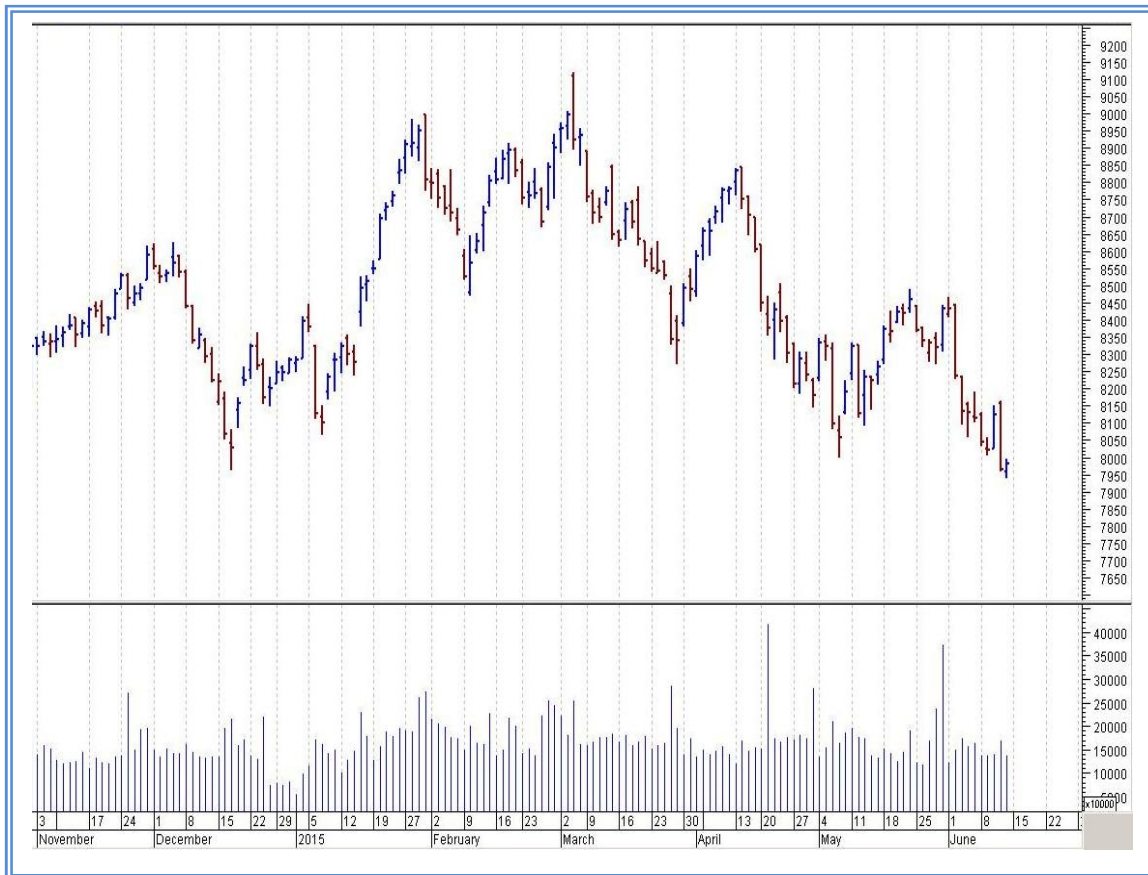
## Top Gainers Weekly

Scrip	Price	% Chg
Essar Oil Ltd.	139.65	39.79
ABG Shipyard	180.85	29.73
Chennai Petro.	134.15	29.24
Bhushan Steel Ltd.	57.65	14.50
Snowman Logistics Ltd	89.20	10.12

## Top Losers Weekly

Scrip	Price	% Chg
Unitech Ltd.	7.55	20.53
Sun TV Network Ltd.	287.00	20.14
Adani Enterprises Lt	93.95	19.39
Jet Airways	264.45	15.82
HCL Infosystem	31.50	15.32

## Nifty Corner



Support & Resistance						
S3	S2	S1	Nifty	R1	R2	R3
7820	7890	7960	7982	8040	8100	8150
Moving Averages						
20DMA		50DMA		100DMA		200DMA
8255		8355		8535		8355

## Market Commentary

The market declined sharply last week with the 50-unit CNX Nifty falling below the psychological 8,000 mark. The broad market also depicted weakness. The sell off was triggered by outflow by foreign portfolio investors (FPIs). The concern of sub-normal rainfall was one of the major reasons for outflow by FPIs. Monsoon is a vital factor that will determine the Reserve Bank of India (RBI)'s future course of action on interest rates. Firm crude oil prices also spooked investors. Rise in global crude oil prices and a weakening rupee are major worries at hand for the RBI and may impact interest rate cut decision in coming months. For the next week nifty likely to trade in the range between 8040 – 8100 in the upper side and 7960 – 7890 in the lower side.

Stocks at 52 wk High

Scrip	Cmp
Dish TV	105.80
Essar Oil	139.65
Praj Industries	89.55
Shreyas Shippin	688.30
TIL	563.35

Stocks at 52 wk Low

Scrip	Cmp
Aban Offshore	303.25
Allahabad Bank	92.35
Bank of India	173.35
Escorts	102.85
Geometric	105.15

FII Activity

Date	Figures in crore
08/06	-749.12
09/06	-645.02
10/06	-482.11
11/06	-622.89
12/06	-670.96
NET	-3170.10

DII Activity

Date	Figures in crore
08/06	529.82
09/06	692.29
10/06	788.06
11/06	589.29
12/06	705.58
NET	3305.04

Weekly Stock Idea

Scrip	B/S	Cmp	Tgt
DISHTV	B	105	112
LICHSGFIN	B	400	418
BATAINDIA	B	992	1018
RAYMOND	B	447	478
NBCC	B	753	788

Buy on dips & Sell on rise with Stop-loss of 3%

Volume Breakout Stocks

Scrip	Cmp
City Union Bank	99.40
MRPL	71.50
Essar Oil	139.65
Inox Wind	410.15
D-Link India	181.10

Week Ahead

MAJOR RESULTS/AGM MEETING THIS WEEK:

15 JUNE: PATELENG, INFY, ASSAMCO

16 JUNE: GRUH, BANKBARODA

17 JUNE: VALUEIND, ASHOKLEY

18 JUNE: SYNDIBANK, ALBK, KOTAKBANK, UNIONBANK, DENABANK, EDL, ATUL

19 JUNE: MAHABANK, PSB, STERLINBIO, HINDUNILVR, BIRLACORPN, ESSELPACK

**VISIT US AT: [WWW.INDIRATRADE.COM](http://WWW.INDIRATRADE.COM)**

**Disclaimer**

This report is for private circulation within the Indira Group. This report is strictly confidential and for information of the selected recipient only and may not be altered in any way, transmitted to, copied or distributed, in part or in whole, to any other person or to the media or reproduced in any form. This report should not be construed as an offer or solicitation to buy or sell any securities or any interest in securities. It does not constitute a personal recommendation or take into account the particular investment objectives, financial situations, or any such factor. The information, opinions estimates and forecasts contained here have been obtained from, or are based upon, sources we believe to be reliable, but no representation of warranty, express or implied, is made by us to their accuracy or completeness. Opinions expressed are our current opinions as of the date appearing on this material only and are subject to change without notice.